

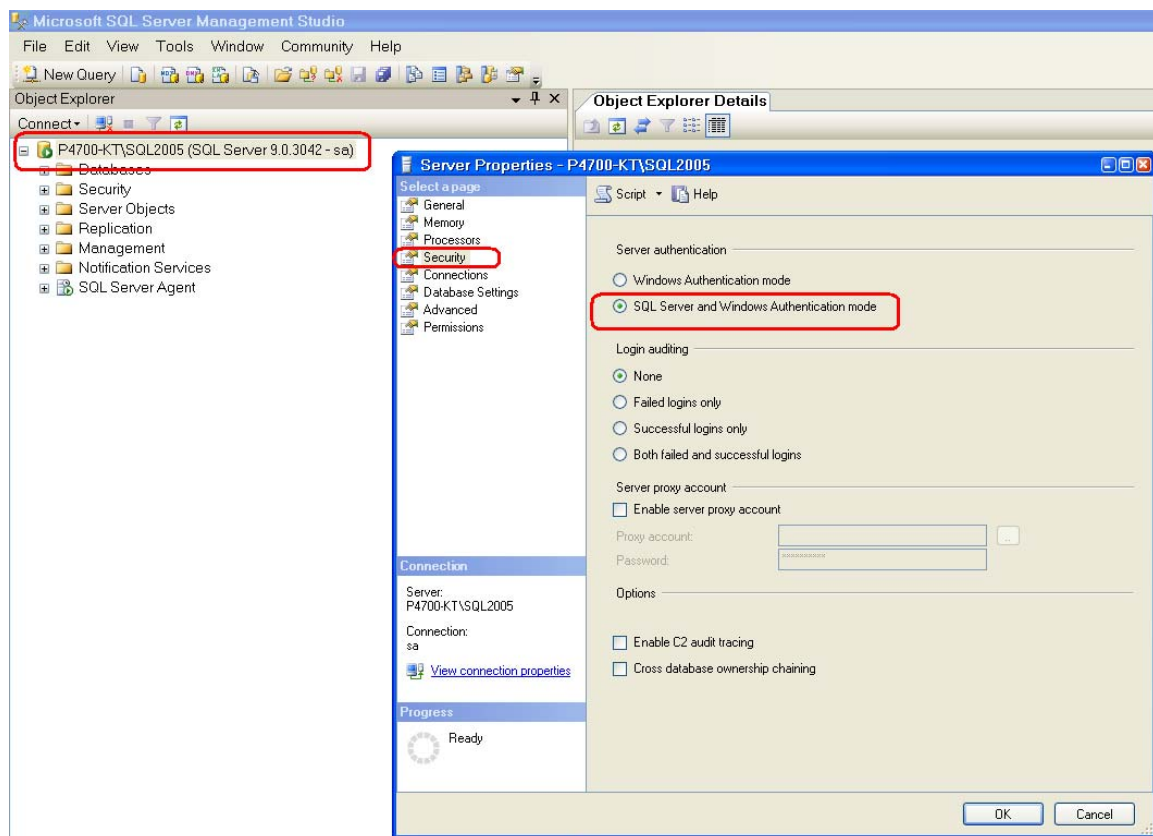
## LogMate<sup>®</sup> Tech Tip: Configuration Changes for DeltaV 9 Upgrade

In order for Capture to connect to the DeltaV SQL server, the SQL Server needs to be setup to use SQL Server Authentication, allow remote connections, and have a user account for Capture to use to login.

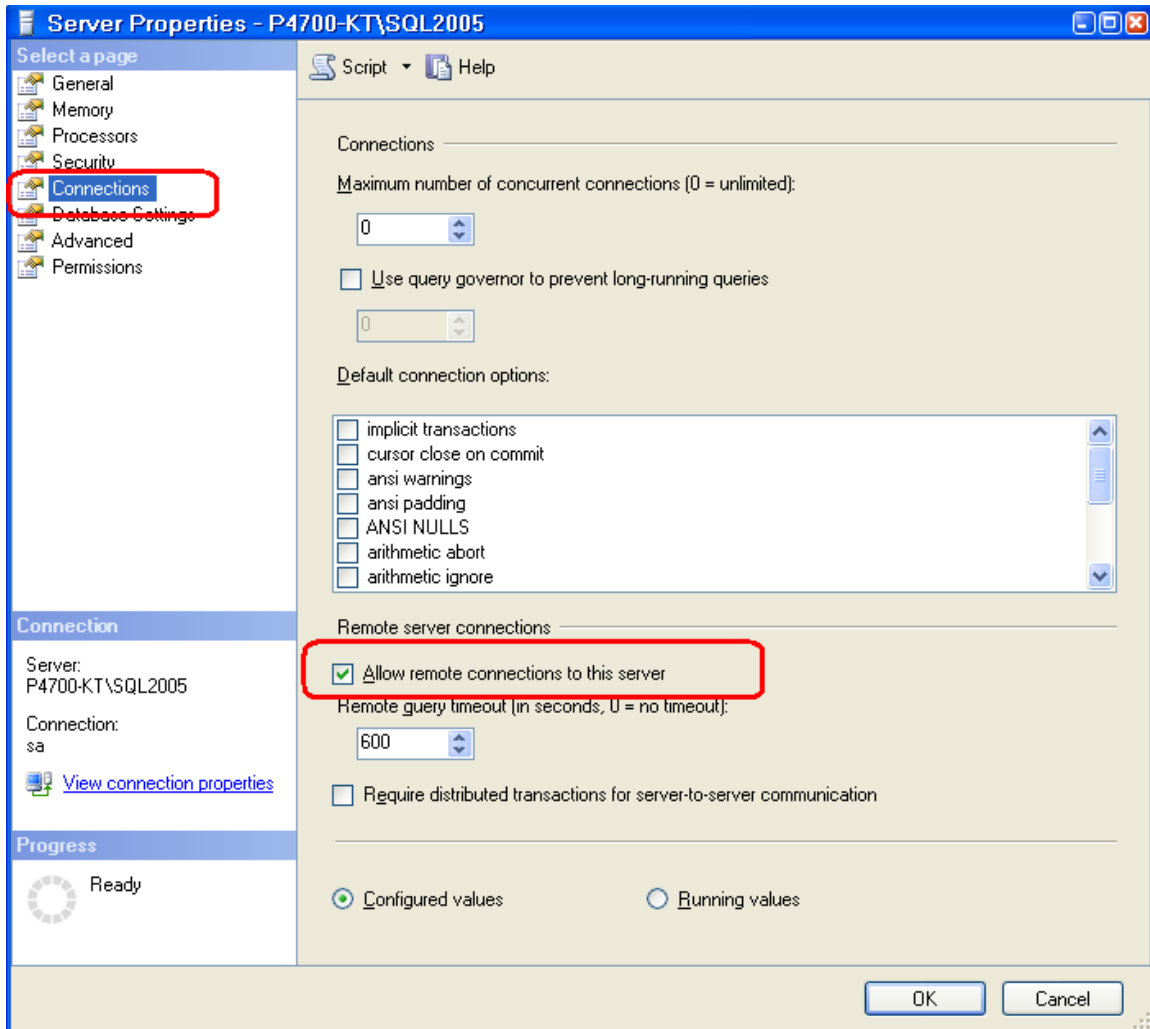
**NOTE:** This document does not take into account dual Domain communication.

**NOTE:** Port 1433 needs to be open if there is a firewall between the two machines.

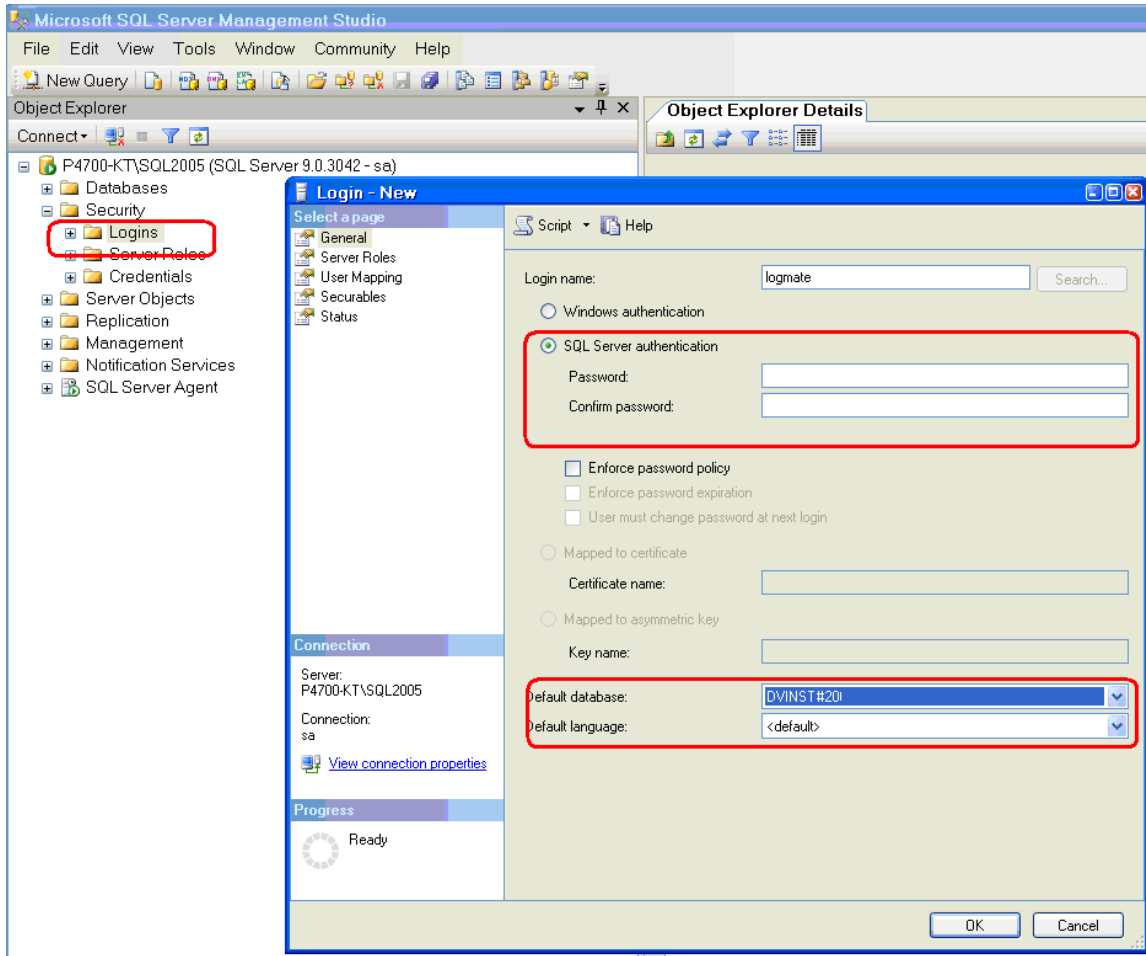
To use SQL Server Authentication, right-click the 'server name' on the left hand side and select **Properties**. On the **Security** page please make sure **SQL Server and Windows Authentication mode** is selected.



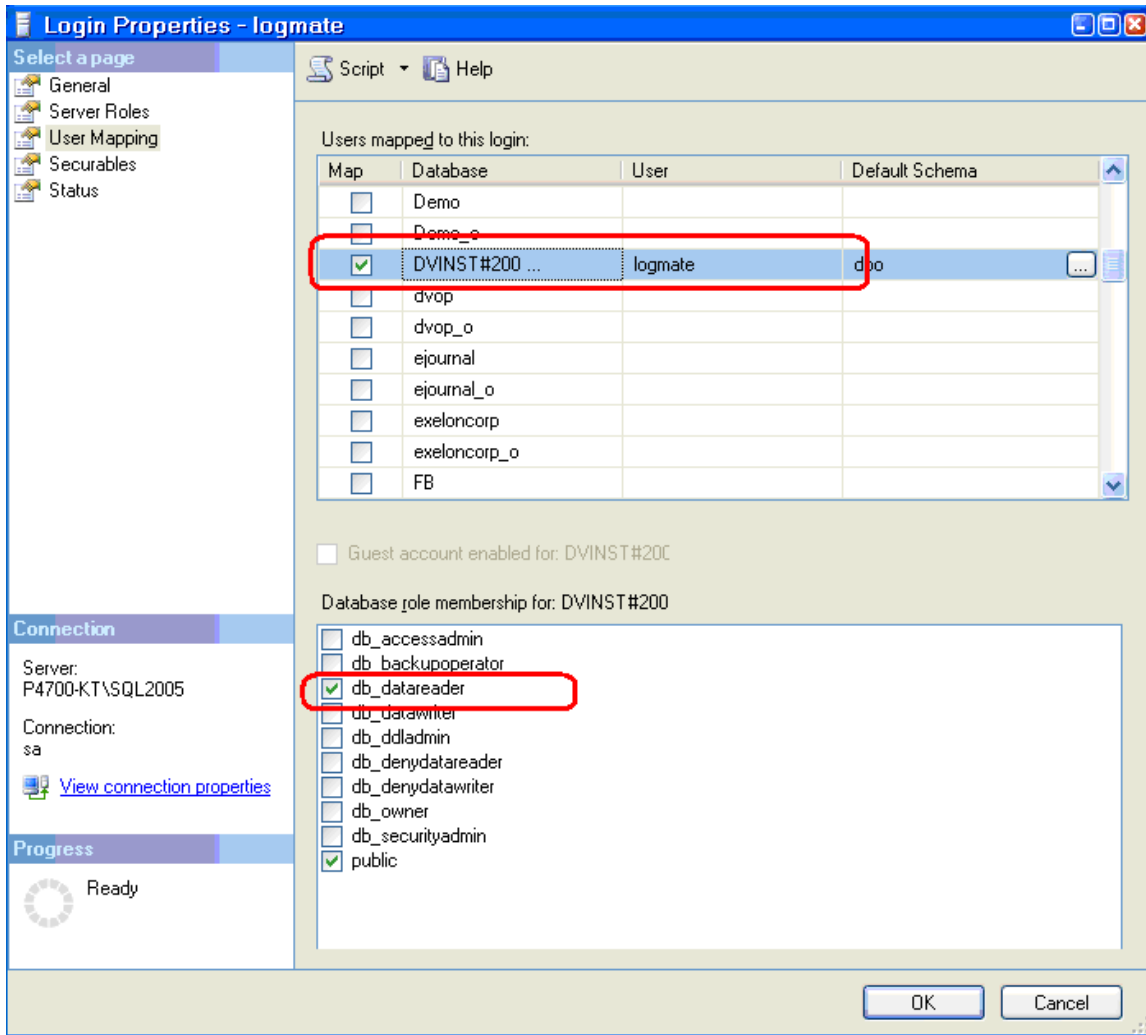
Then on the **Connections**' page, check **Allow remote connections to this server**.



To create a user login account for Capture, open **Security** on the left side and Right-click **Logins**, then select **New Login**. Enter the login name, password and default database on the **General** page,

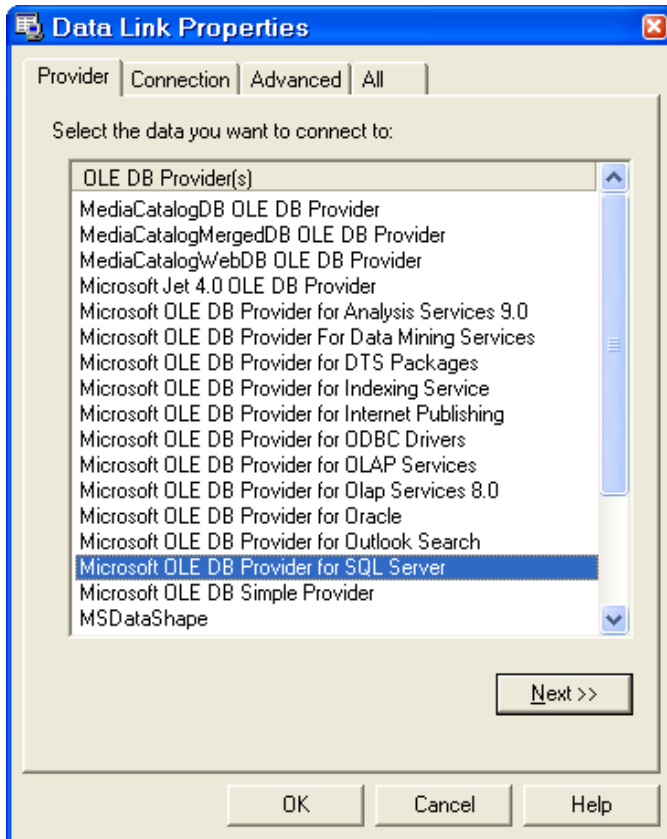


then click the **User Mapping** page and grant **db\_datareader** permissions to the database.



To verify that the **LogMate** machine can connect to the DeltaV Sql Server, right-click on the Logmate desktop and create a new notepad document. Rename the extension of the new file to .UDL. This will change the icon and open a Data Link Properties window for you.

Click the **Provider** tab at the top of the **Data Link Properties** window. Scroll down the list and select Microsoft **OLE DB Provider for SQL Server** and click the **Next** button.

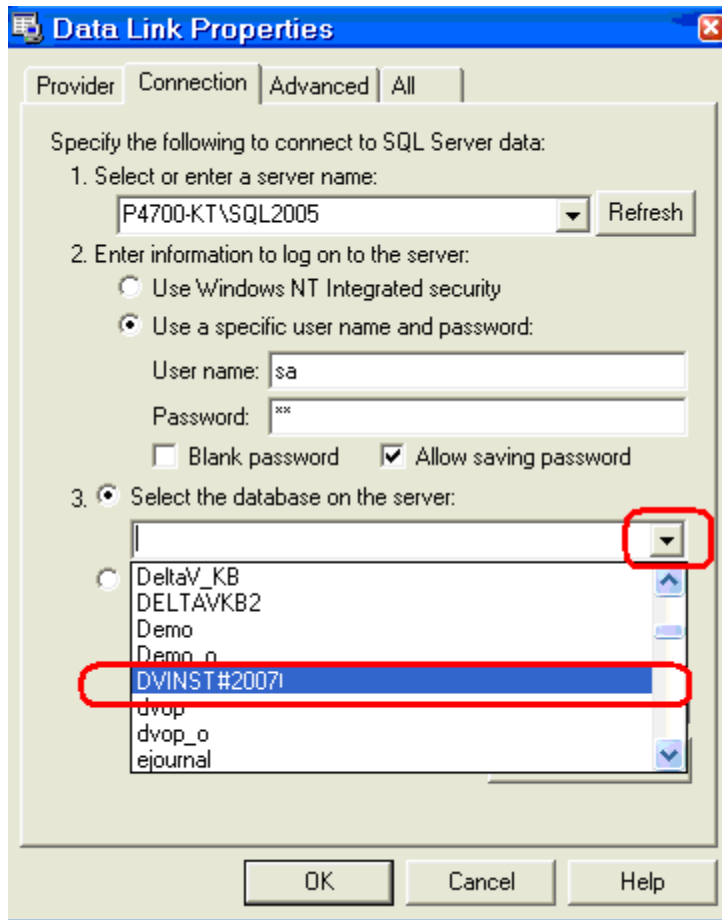


On the **Connection** tab, enter the following details:

1. DeltaV SQL Server name
2. The User name/Password for the DeltaV SQL Server that Logmate will be using.

**NOTE:** The settings for Authentication will be dependent on network protocols, if you are unsure please consult your network admin or IT department.

- If Domain authentication is require, check **Integrated Windows Authentication**
3. If you are able to connect to the SQL Server then you should see a list of databases on the SQL Server in the drop down for #3.



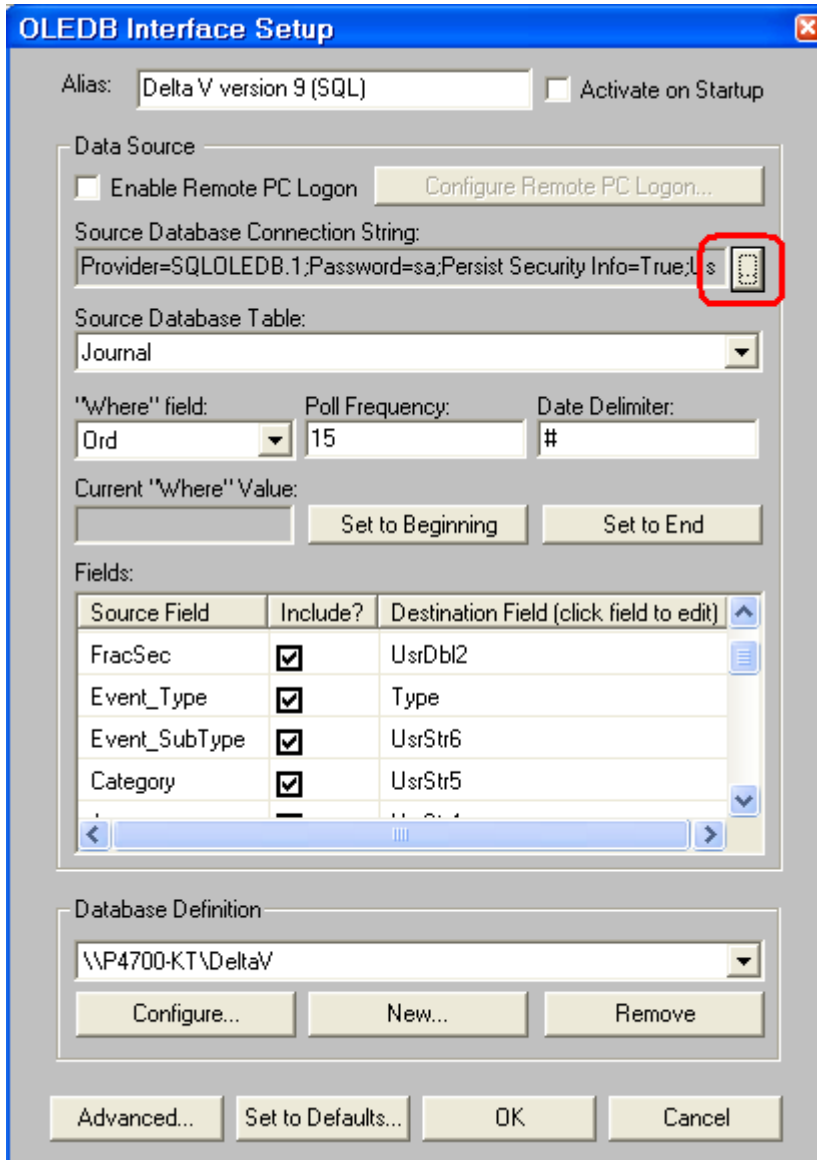
If you can see the databases then we are able to connect to the Journal file and are ready to configure Capture.

**NOTE:** Make sure the **Allow Saving Password** box is checked.

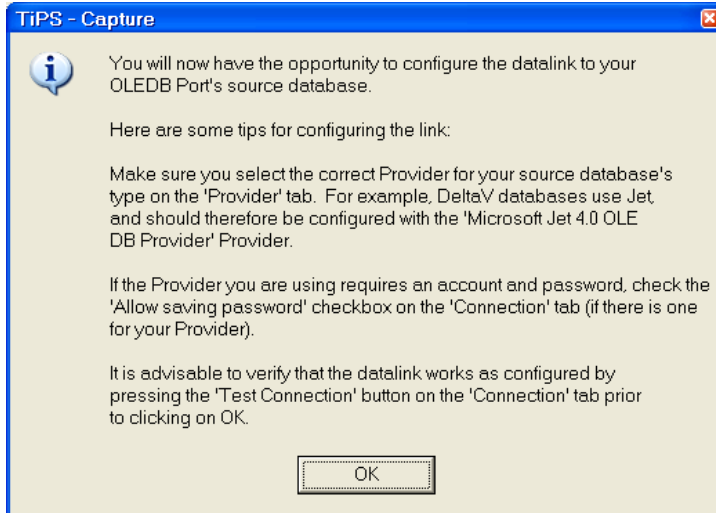
In Capture,

The first step to perform is adding the **Database Definition** at the bottom of the window. This allows for proper field mapping as the port is configured.

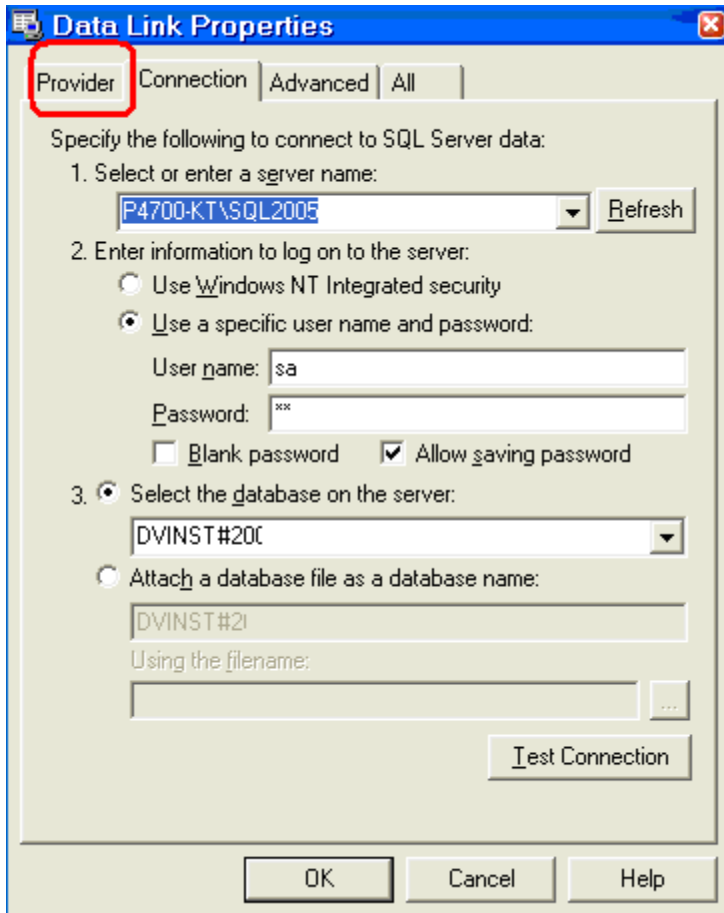
Deactivate the port, right-click and select **Configure One Port** from the menu. Click the button next to **Source Database Connection String**.



Say **OK** to the next message.

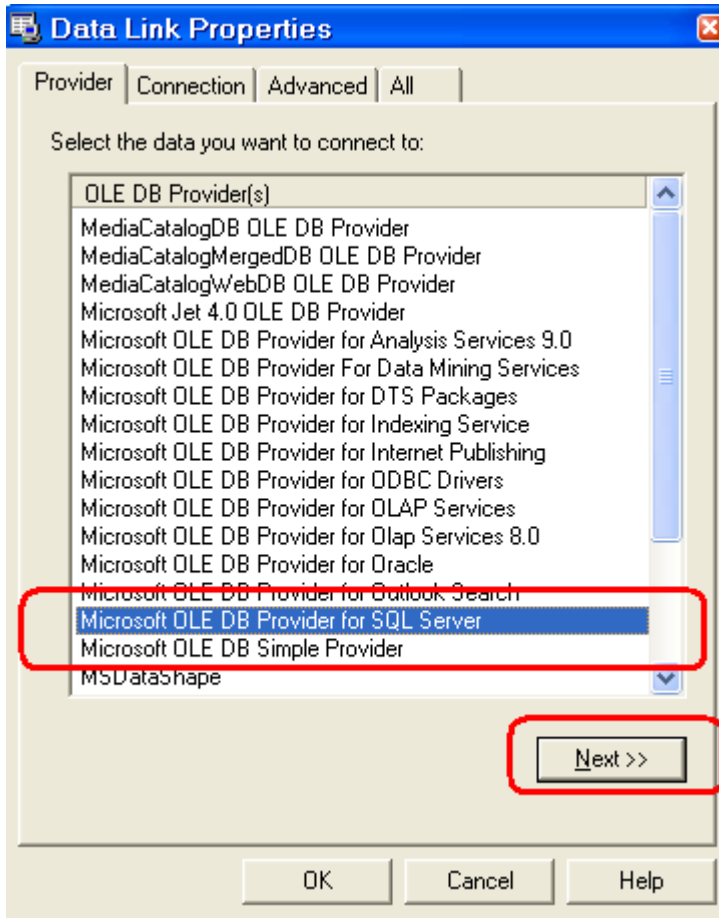


Click on the **Provider** tab at the top.



Scroll down the list and select **Microsoft OLE DB Provider for SQL Server** and click the **Next** button.

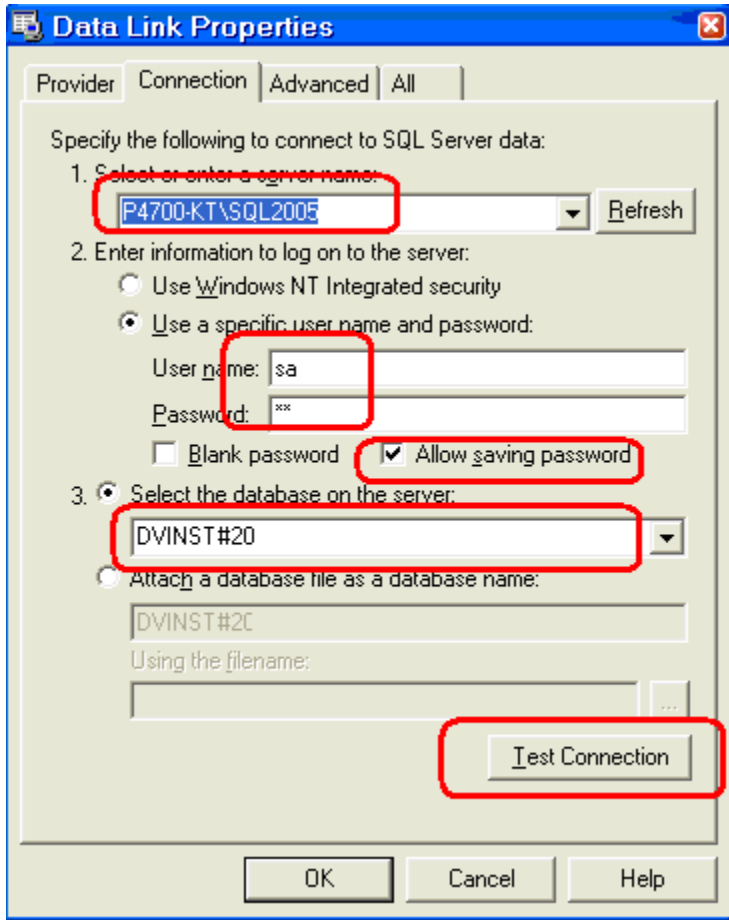




On the **Connection Tab** you will need to

1. Select the SQL Server that Delta V is using.
2. Enter a User name and Password that has a minimum of 'read' permissions to the Delta V database in SQL. This you will need to get from the Delta V representative. We typically use the 'sa' account, but sometimes this account has been disabled when SQL was installed.  
**NOTE: Be sure to check the box to 'Allow saving password'.**
3. Select the database that Delta V is writing the alarm info to.

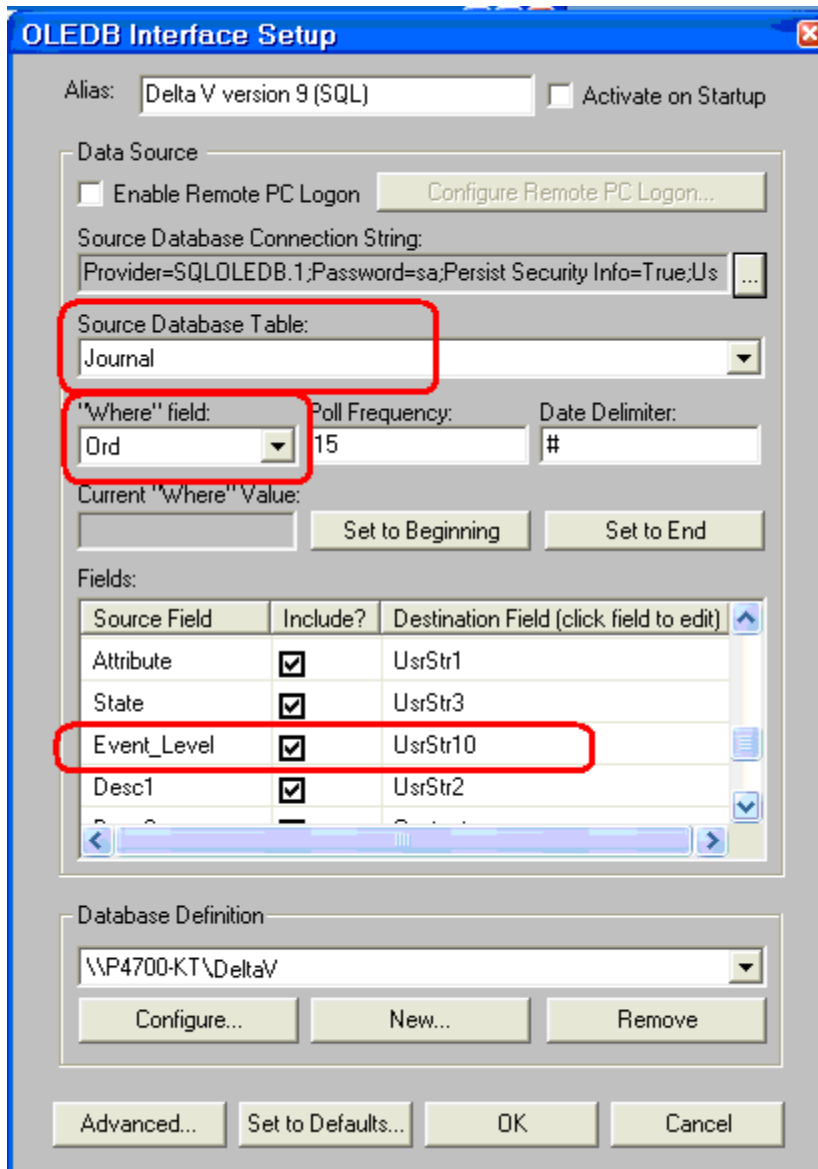
'Test Connection' to verify we were able to connect to SQL and read the data.



If the 'Test Connection' fails, you will need to verify all the information entered and also if there is a firewall that is blocking communications to SQL. The default port used by SQL is 1433.

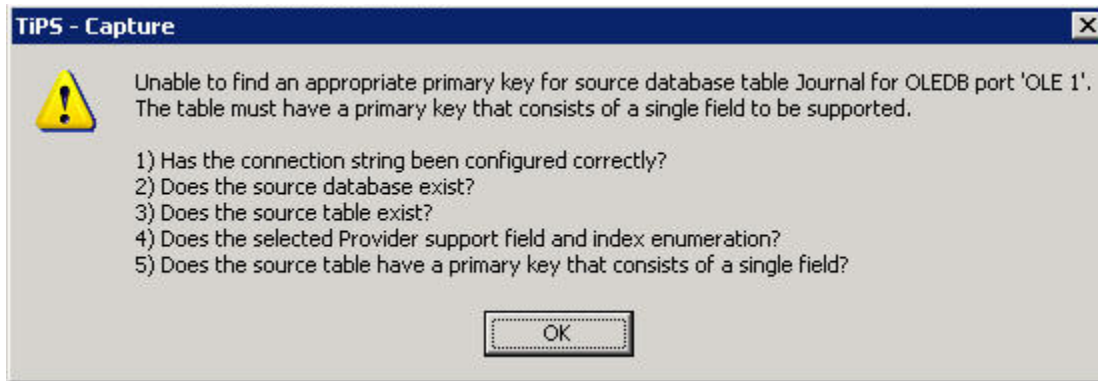
Once the 'Test Connection' is successful then the rest of the screen entries should be simple to follow.

Change the **Source Database Table** to **Journal** by selecting it from the dropdown menu or an error will be displayed stating there is no indexed field for the table.

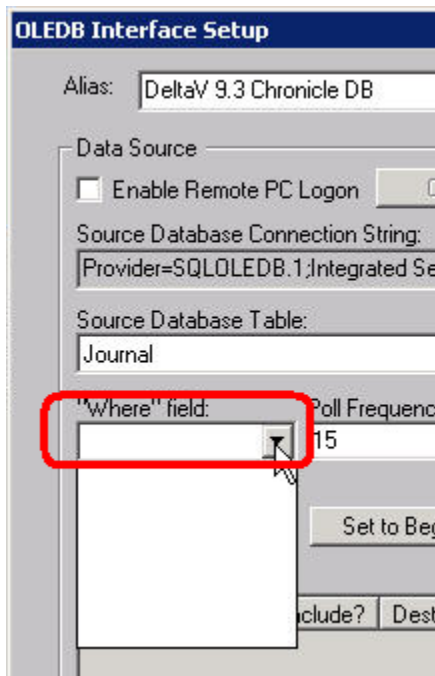


There may be a new field in the Delta V database called **Event\_Level**. If so, we may need to add an additional UsrStr field to the TiPS database.

## Trouble Shooting Errors with DeltaV Upgrades



You are missing the Key value in the configuration settings.



If you receive the Primary key error, perform the following steps:

1. In the **OLEDB Setup** window, click the **Advanced** button on the lower left. The **Advanced Port Configuration** window appears.
2. Click the **ODBC Connection** tab.
3. Enter *Ord* in the **Primary Key in Source Table** field and then click the **OK** button.
4. Check the box for **Direct Mapping**.

5. Click the **Set to Defaults** button.
6. Click **OK** and activate the port.

To verify *Ord* as the correct key value, launch SQL Management and look in SQL at the **Journal** table.

The screenshot displays the Microsoft SQL Server Management Studio Express interface. On the left, the Object Explorer shows the database structure for 'PRO\_PLUS\DELTAV\_CHRONICLE (SQL Server 9.0.2047 - CEDALOG)'. Under 'Tables', the 'dbo.Journal' table is expanded, showing a list of columns. The 'Ord (int, not null)' column is highlighted with a red rectangular box. On the right, the query window shows a SQL query: `select count(distinct ord) from journal;`. Below the query window, the Results pane displays a single row with the value 172198.

(No column name)
1